

DC 高效塑料叶轮后倾离心风机  
DC High-efficiency Backward Curved Centrifugal Fan

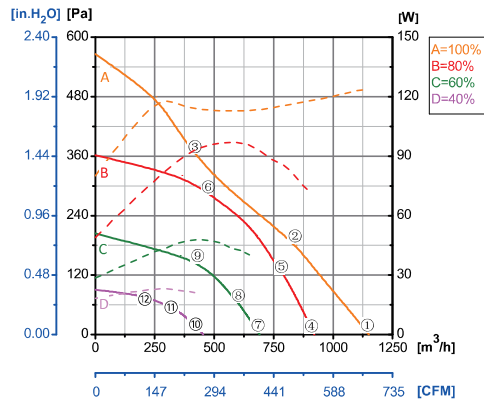
ErP2015  
EXCEEDS THE NORM



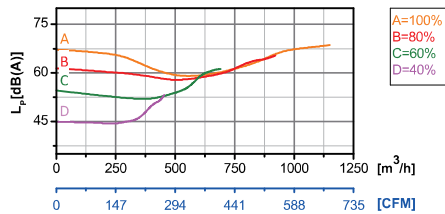
Φ 225

转子材质 Rotor Material: 碳钢 Carbon steel  
 叶轮材质 Impeller Material: 塑料 Plastic  
 防护等级 Ingress Protection: IP42  
 绝缘等级 Insulation Class: F  
 轴承类型 Bearing Type: 免维护滚珠轴承  
 Maintenance free ball bearing

性能曲线 Performance Curves



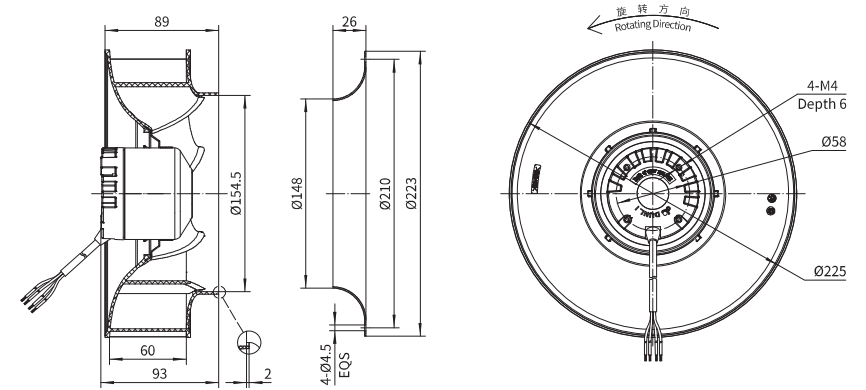
测试节点 Test Point	转速 Speed rpm	输入功率 Input Power W
1	2800	124
2	2509	117
3	2397	114
4	2235	71
5	2235	86
6	2234	96
7	1677	38
8	1678	43
9	1678	48
10	1119	20
11	1119	22
12	1119	23



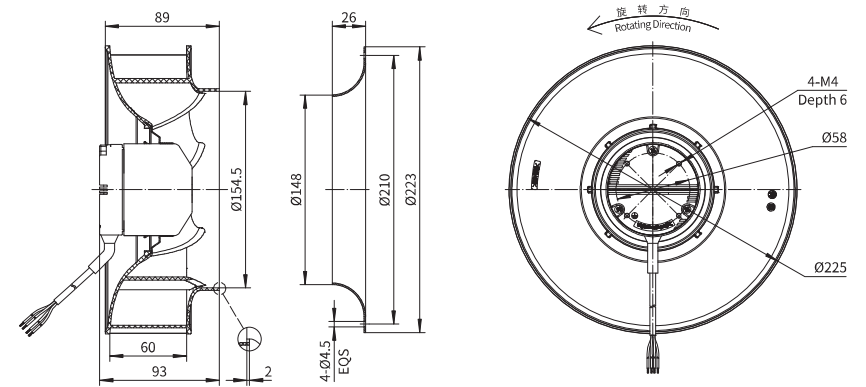
Erp2015 Data:  
 Efficiency  $\eta_{statA} = \% < 125W$   
 Efficiency grade  $N_{actual} = , N_{target} = 62$   
 Test report NO. : L-20210302-005-109

产品型号 Model No.	电压 Voltage	频率 Frequency	转速 Speed	输入功率 Input Power	电流 Current	运行温度 Working Temp.	认证 Approvals
	VDC	Hz	RPM	W	A	Min/Max (°C)	
DC72-B225-A01	24	/	2800	120	5.00	-20/+60	CE
DC72-B225-C01	48	/	2800	120	2.50	-20/+60	CCC,CE
DC72-B225-D10	310	/	2800	120	0.39	-20/+60	CCC,CE

后倾离心风机 Motorized Backward Curved Impeller (24V&48V)



后倾离心风机 Motorized Backward Curved Impeller (310V)



高效塑料叶轮后倾离心  
High-efficiency B/C Centrifugal